

STREET SMART

Serene and welcoming, Avenue Road 8A, a new concept space in Manhattan, encourages guests to become immersed in the spacious apartment-style interior filled with exclusive furniture, lighting and art from the likes of Christophe Delcourt, Van Rossum, and Kvadrat/Raf Simons. avenue-road.com

NEW YORK



COPENHAGEN
GREAT DANES

Danish brand Menu called on Norm Architects to design its new Copenhagen showroom, which also houses a co-working office and a cafe for like-minded creatives. menu.dk



SYDNEY
GOOD FIT

SYDNEY CBD WELCOMES SWEDISH FASHION BRAND ACNE STUDIOS. ROBUST, SHARP AND CONTEMPORARY FINISHES, LIGHTING AND FURNITURE SUITABLY REFLECT THE BRAND'S DISTINCT MINIMALISM. ACNESTUDIOS.COM



Editor's choice

Curated collections of global design pieces are making headlines.



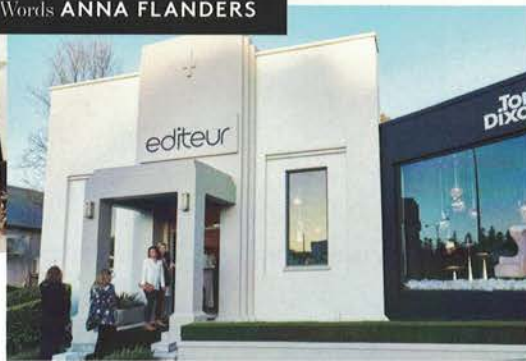
PERTH



Editeur is a coming of age for renowned Perth-based interior designer Christian Lyon (left). He has opened up his little black book of contacts built up over 21 years to step into the retail realm for the first time. "Editeur is about what influences me and what gets me thinking. It allows me to be adventurous and to celebrate the work of different artisans and designers," says Christian.

For the Australian design scene, that means a seasonal edit of one-off lighting, sculpture, furniture and objets sourced locally and globally; Christian's own designs through Christian Lyon Design; and new collaborations with respected international creatives and design houses, such as Augarten, Lobmeyr and Hervé van der Straeten, and with Australian artisans who don't have a retail platform.

Words **ANNA FLANDERS**



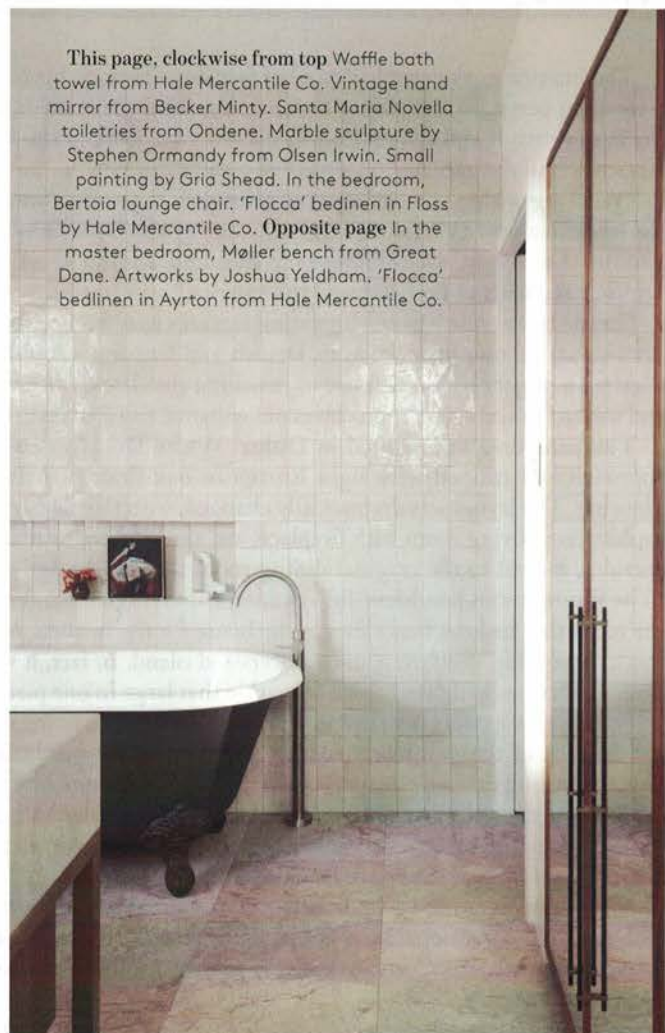
For Western Australia, Editeur is the Tom Dixon flagship store, giving Perth a one-stop-shop of the British designer's lighting, furniture, objets and products. It is the Perth home of Christian's designs under the Matsuoka label and, following an almost sell-out Graham Shearer exhibition, a new art space.

Located downstairs from his Christian Lyon Design studio on the Peppermint Grove-Cottesloe cusp it's a very personal venture for Christian, with life and business partner Russell Date (far left) providing the down-to-earth yang to Christian's high-end ying. And it's a platform for Christian to curate "stories and journeys" within the store that reflect his personal 'edit' on a design trend.

Currently on the floor is lighting by Christopher Boots alongside luxury pieces by Willy Rizzo, Rougier, Mattia Bonetti, Robi Renzi and R & Y Augousti. There are ceramics by Studio Enti, vessels by Lightly, bedding by Hale Mercantile Co, and scents by Histoires de Parfums, plus glassware by Josef Hoffmann. "There's a back story to everything," Christian says. "Every piece in here will have a history, credibility and integrity behind it - that's really important to me." editeur.com.au



This page In the main bedroom are two-tone custom curtains by Lynch's Window Fashions. 'Lust' pendant light from About Space. Hale Mercantile Co. bed linen. 'Escape Velour' carpet in Spell from SuperTuft. Opposite page The bathroom mirror was inspired by the shape of the original leadlight windows. Reece 'Clearwater Formoso' freestanding bath.



This page, clockwise from top Waffle bath towel from Hale Mercantile Co. Vintage hand mirror from Becker Minty. Santa Maria Novella toiletries from Ondene. Marble sculpture by Stephen Ormandy from Olsen Irwin. Small painting by Gria Shead. In the bedroom, Bertio lounge chair. 'Flocca' bedinen in Floss by Hale Mercantile Co. **Opposite page** In the master bedroom, Møller bench from Great Dane. Artworks by Joshua Yeldham. 'Flocca' bedlinen in Ayrton from Hale Mercantile Co.



SPEED READ

» When an expat family bought this heritage-listed Arts and Crafts house on Sydney's north shore they engaged an exceptional design team comprising Brett Churcher and John Hooghuis of Playoust Churcher, Justine Hugh-Jones and Katrina Mackintosh of Justine Hugh-Jones Design and Peter Fudge of Peter Fudge Gardens to overhaul the house and its expansive grounds and make it suitable for contemporary family living. » A rabbit warren of dark, low-ceilinged, damp rooms, disconnected from the garden, tennis court and pool, were transformed into casually sophisticated, light-filled spaces, punctuated by an extensive Australian art collection and carefully curated lighting, design pieces and accessories.