

IS THERE A PARTICULAR PERIOD OR STYLE THAT APPEALS TO YOU? We both have very diverse taste as you can see by our treasures but Asian style and design and handmade are most appealing. Good original design in quality pieces. No copies!

WHAT COULDN'T YOU LIVE WITHOUT? Hard to choose. When we moved in and unpacked all our treasures we thought perhaps we should cull but decided we could not live without any of the pieces, hence the clutter!

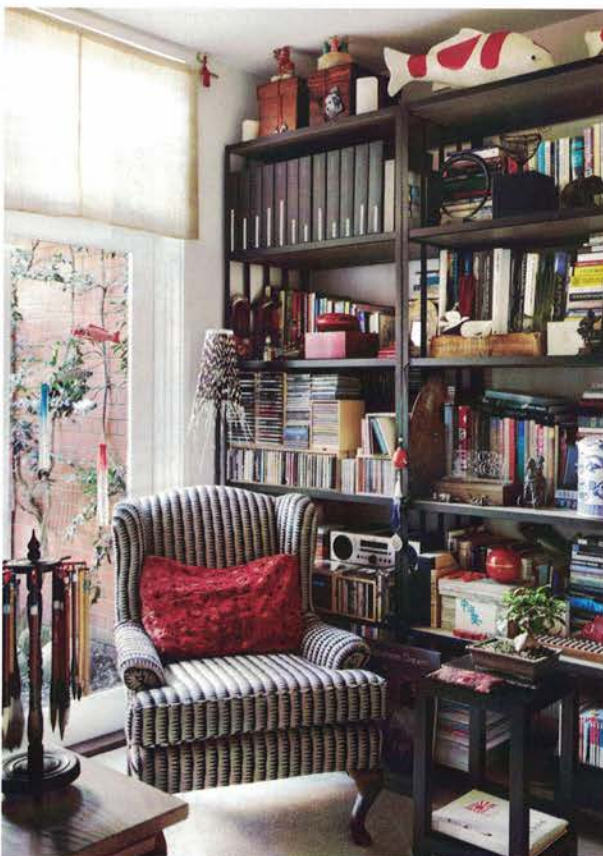
IF YOU DIDN'T LIVE IN MELBOURNE, WHERE ELSE WOULD YOU LIVE? We lived on the Greek Island of Skiathos and in Richmond, Surrey, UK, for some years but when we returned to Australia we decided that Melbourne was the only place for us.

WHICH DESIGNERS, ARCHITECTS OR INTERIOR DESIGNERS DO YOU ADMIRE AND WHY? Tadao Ando for his striking, simply designed buildings; Sean Godsell as the best Australian architect; Vincenzo de Cotiis, an amazing Italian designer whose use of diverse materials creates stunning pieces; Thomas Hamel – we love his mix of styles; Christopher Boots – an amazingly talented local designer of simply beautiful original pieces.

WHO ARE SOME OF YOUR FAVOURITE ARTISTS AND DO YOU COLLECT ANYONE IN PARTICULAR? As you can see Joshua Yeldham stars on our walls, he is our absolute favourite. Also Marco Luccio and Judy Holding.

WHAT PROJECTS ARE YOU CURRENTLY WORKING ON? As freelance consultants we have a number of clients in both retail and online at the moment.

WHAT IS THE PHILOSOPHY BEHIND YOUR WORK? Now that we have closed H&H retail we decided it was time to 'get a life' and enjoy! However, we also like guiding and assisting people in the industry wherever possible. [bermonbermon.com.au](http://bermonbermon.com.au)



This page, from top Yemen painting by Damon Kowarsky, Joshua Yeldham *Red Bull Hunger* painting, Ruth Levine bracelet, antique Japanese lacquer pieces, Otafuku mask, painting and dressing table all from Kazari. In the bedroom, two Ifugao figures, two artworks by Debra Luccio (far left), and one by John McPhee (left). Bedlinen and bedhead from Hale Mercantile Co. Barbara's grandmother's chair covered in Andrew Martin fabric in the study.



This page, clockwise from top left Glass stool by Henry Dean from Ondene. 'los' bath from Victoria + Albert and tapware in aged brass from Astra Walker. Vanity and mirrors custom designed by Justine Hugh-Jones Design. Wall lamp from Articolo and accessories from Becker Minty. Gervasoni bed from Anibou, bedlinen from Hale Mercantile Co. and woollen blanket from Hermès. 'Moller' bench from Great Dane. Artwork by Martine Emdur from Olsen Gallery.





This page, clockwise from left Joinery by Fine Lines Cabinetry. Custom copper handles from Designer Doorware. Apaiser basin from Rogerseller. In the dressing room, Osborne & Little 'Rosabella' wallpaper from Seneco. Custom copper mirror by Tina & Louise. 'Kelly' ottoman from Jordan. Jonathan Adler Mongolian lamb bench from Coco Republic. White linen bedhead from MCM House. Bed linen from Hale Mercantile Co. Gubi 'Grasshopper' floor lamp. Artwork by Lydia Balbal. **Opposite page** Bench from Bali. Sheepskin from Les Interieurs. Artworks by Daniel Walbidi from Short Street Gallery.

Federation detail at the front is replaced by ethnic touches at the back of the house, and the privacy of upstairs sleeping quarters contrasts with the sociableness of downstairs living areas.

Amping things up in spaces not defined by internal walls was the starting point for Ali and Tina "to counter the largeness of the space and create some internal, more intimate moments using texture and tone that are little pockets of surprise," says Tina.

Large doors fold back to open the back of the house to an outside room and pool. Knowing that the gardens would provide a lush green backdrop with extensive planting of single varieties, Tina furnished the open-plan back of the house in a riot of her signature high-energy palette, and contrasted it with dark, handsome cabinetry. Ali describes this room as "a little Stevie Nicks", but I think it's more Solange Knowles on summer break. "The bright palette tempered with the dark wood and the view through to the evergreen garden works so well," says Tina. And like every good resort, it's a clever case of reveal and conceal.

Beyond the grand architectural gestures and colour clashes, there was motivation to get every single thing right. "Everything from how I cook in the kitchen to where I wrap the birthday presents was considered, so things were put in just the right position and given adequate storage," says Ali.

The southern side of the house was allocated to services, including a butler's pantry, locker room, small office and laundry. "The locker room has several purpose-built cupboards for each of the children, as well as for my husband and I, for all our bags and sports equipment, so everything can be unpacked out of sight and right next to the laundry," says Ali.

This is a house that looks relaxed but whose internals are like clockwork. "Exactly," says Ali, "I wanted something that looks permanently beautiful but supported our busy family life." ■

